



**INTERNATIONAL  
IC TOWER  
CRANES  
CONFERENCE & RECEPTION**

**Daniel Gwózdź**

CEO of Krupinski Cranes

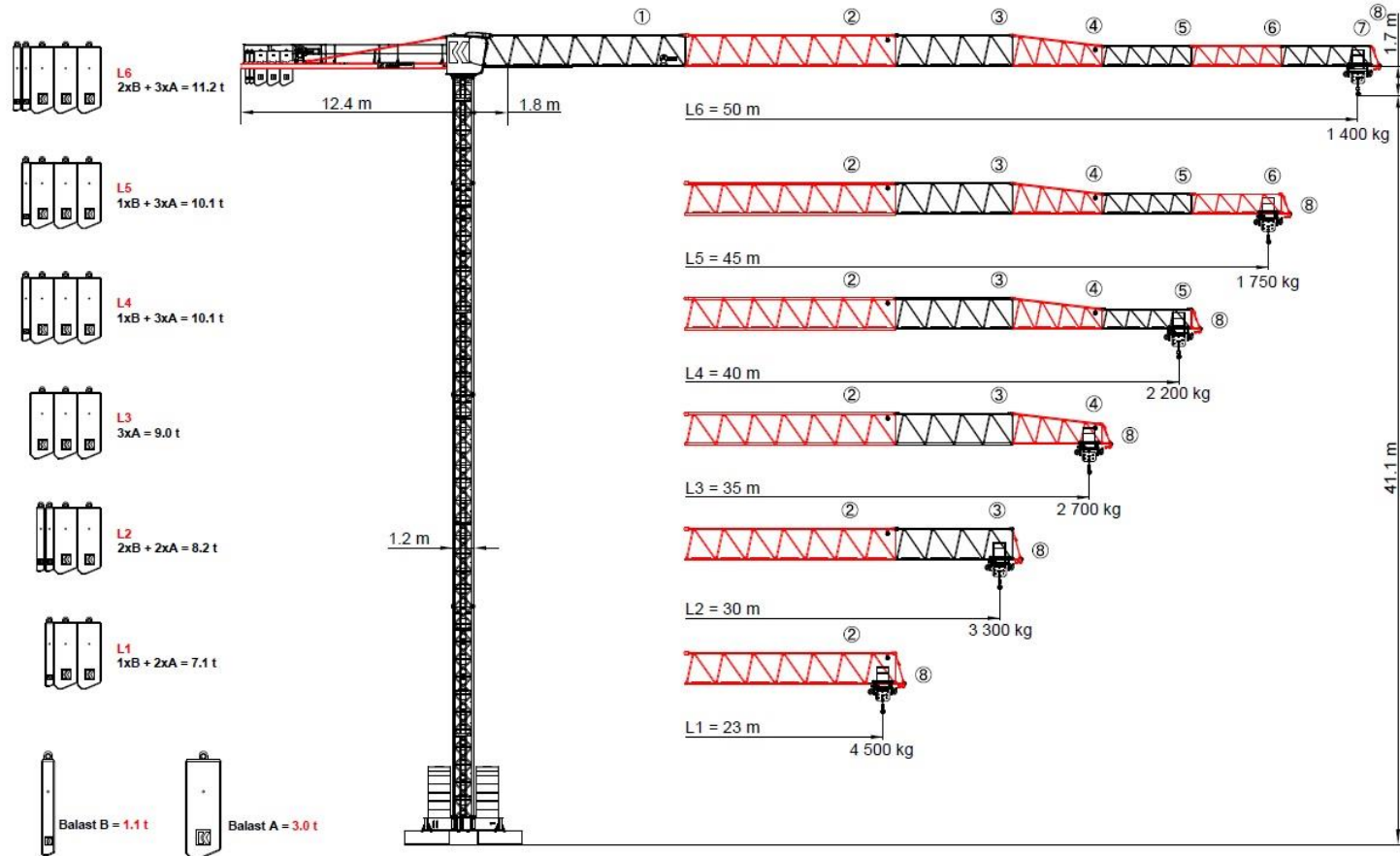
**Jacek Krupinski**

Responsible for engineering of Krupinski Cranes



**Polish tower crane manufacturer**

## KR 90-5 First Polish top slewing crane ever designed



## KR 90-5 First Polish top slewing crane ever designed



## MODELS OF TOP SLEWING CRANES YEARS 2018 - 2024

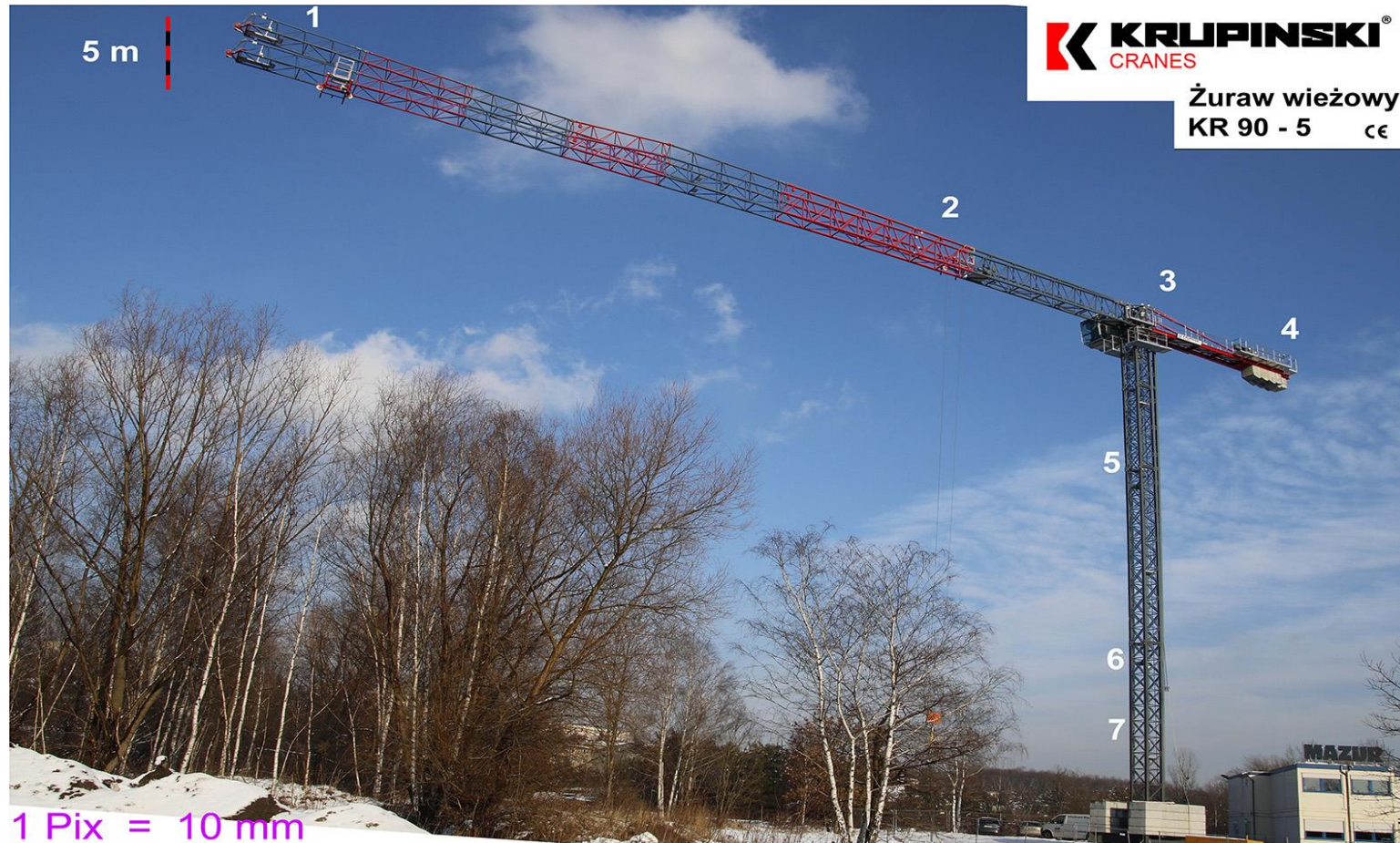
RODZAJE, MODELE ŻURAWI, ROZPISKA SYSTEMÓW WIEŻY, PODSTAW, ORAZ SYSTEMÓW KOTWIENIA I KLATKOWANIA.

Lp.	model	max capacity [t] / maksymalny udźwig [t]	R-Max [m] / Maksymalny wysięg [m]	capacity on max radius [t]/ udźwig na maksymalnym wysięgu [t]	Tower System / System wieży	Main profile / główny profil wieży	rodzaj kotwy traconej
1.	KR 90-5 FT	5	50	1,4	TS10	HEM 140	FF140 M
2.	KR 90-6 FT	6	50	1,4	TS10	HEM 140	FF140 M
3.	KR 130-5 FT	5	55	2	TS14	HEM 140	FF140 M
4.	KR 160-5 FT	5	60	2,2	TS14/TS19	HEM 140	FF140 M
5.	KR 160-8 FT	8	60	2,1	TS19	HEM 140	FF140 M
6.	KR 190-8 FT	8	65	2,1	TS19	HEM 140	FF140 M
7.	KR 220-8 FT	8	65	2,8	TS211	HEM 160	FF160 M
8.	KR 220-10 FT	10	65	2,6	TS211/TS212	HEM 160/HEM 200	FF160/FF200
9.	KR 260-10 FT	10	70	2,5	TS211/TS212	HEM 160/HEM 200	FF160/FF200
10.	KR 320-16 HH	16	75	2,5	TS211/TS212	HEM 160/HEM 200	FF160/FF200
11.	KR 420-20 HH	20	80	2,5	TS212	HEM 200	FF200

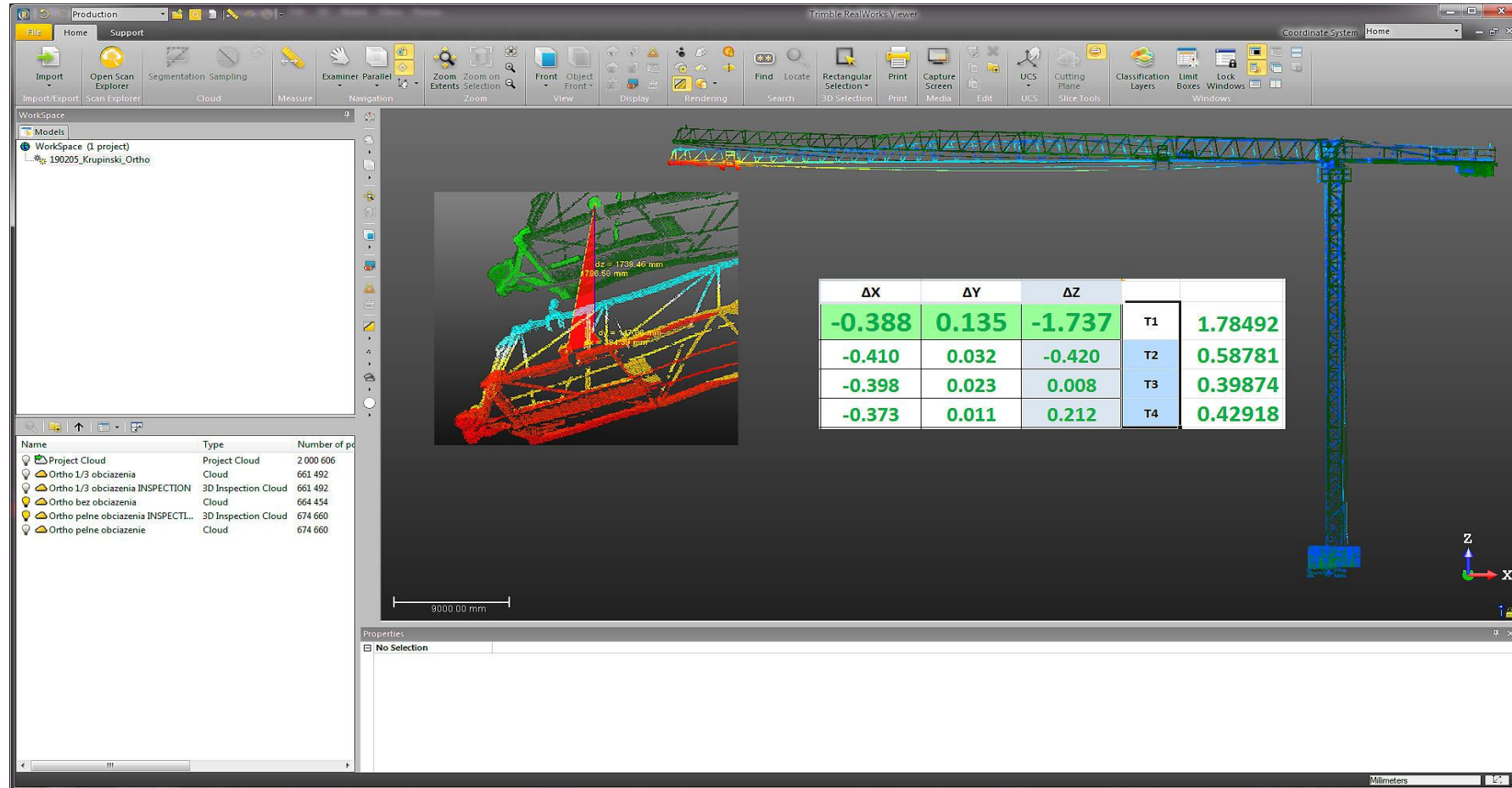


## Crane inspections and structure deformation

## Analysis of the deformations of the KR90-5 prototype structure and their comparison with the design assumptions

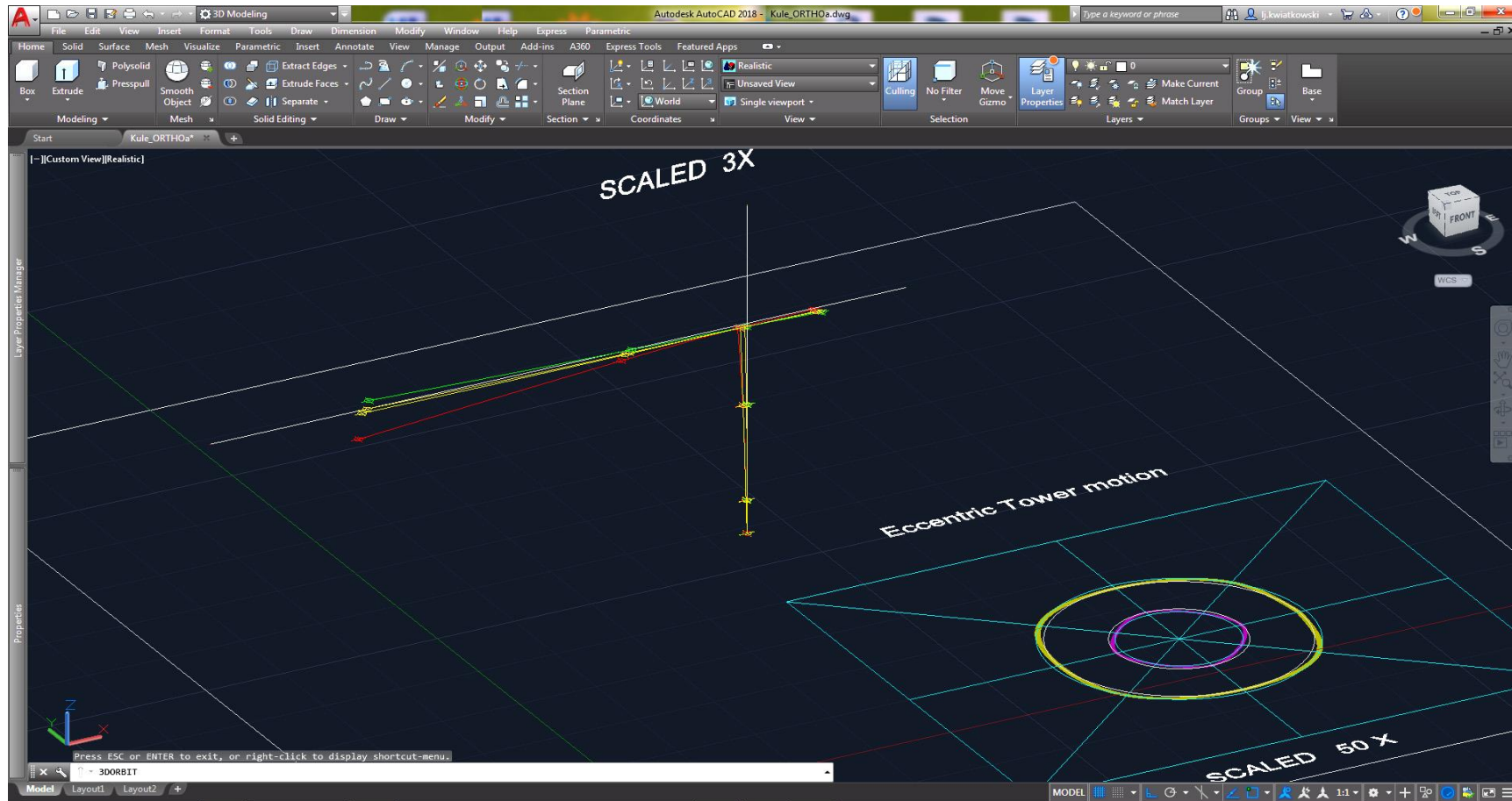


# Analysis of the deformations of the KR90-5 prototype structure and their comparison with the design assumptions

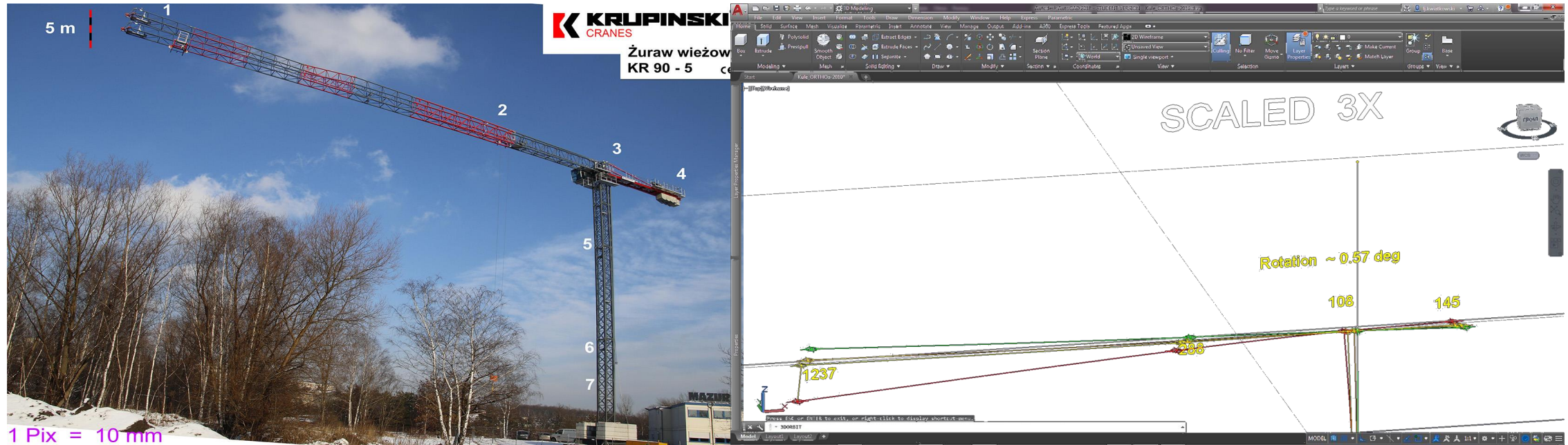




# Analysis of the deformations of the KR90-5 prototype structure and their comparison with the design assumptions



# Analysis of the deformations of the KR90-5 prototype structure and their comparison with the design assumptions



The difference between theoretical calculation and reality is only 3% !!!





**Thank you for your attention**